

# Hygoclave 40 – the new pacesetter in the hygiene cycle

Class B steam steriliser designed to meet the highest professional requirements



# Simple and reliable – for smooth day-to-day practice workflows

In order for sterilisation equipment to really make a difference in demanding day-to-day practice, it needs to deliver outstanding strengths in all key areas. This includes ensuring reliable sterilisation results and offering a combination of genuinely user-friendly operation, exceptional efficiency and high reliability. With the Class B Hygoclave 40, Dürer Dental meets the highest professional requirements for sterilisation cycles and therefore provides a cost-effective basis for successful day-to-day working.

## Hygoclave in a nutshell

### Efficient and powerful cycles

- Fast cycles (Class B) and powerful drying technology
- Economical water and energy consumption

### Incredibly user-friendly

- Straightforward and intuitive user interface
- Great flexibility in terms of fresh water supply connections
- Water treatment system for automatic water supply
- Integrated filling pump for semi-automatic water supply

### Very easy to service and maintain

- Modular design for straightforward inspection and repairs
- Hard-wearing, high-quality components

### Large internal memory

- More than 100,000 cycle records



# Hygoclave 40 at a glance

## Convenient and easy to use

### Intuitive operation

With a high-resolution 5" colour touch display featuring an intuitive user interface, it couldn't be easier to use and operate your Hygoclave 40.



### Motorised door

The automatic door lock makes for particularly user-friendly and safe loading and unloading of the sterilisation chamber.

### Programmed start

When it comes to planning workflows and time schedules in the day-to-day workings of your practice, the option to freely program the start of the sterilisation cycle offers great flexibility and maximises efficiency.

### Integrated filling pump

Maximum flexibility for filling the fresh water container thanks to the additional connections on the front and the integrated filling pump.



## Reliability & efficiency

### Conductivity sensor

To protect against harmful limescale deposits and maintain the efficiency and performance of the unit, Hygoclave 40 is equipped with an integrated conductivity sensor. This continuously monitors fresh water quality and thus contributes to smooth, long-term operation of the unit.

### Durability

Thanks to the premium quality, robust stainless steel chamber.

### Rapid B flash cycle

The thermodynamically optimised B flash cycle not only allows Class B sterilisation cycles to be performed in the shortest possible space of time, but it also reduces water consumption.

## Safety & documentation

### Hygoprint Easy

The printer, which can be purchased as an optional extra, is used to print out both cycle records and barcode labels. These contain all the necessary information about the sterilisation cycles performed.



### User management

Personalised performance and release of sterilisation cycles thanks to the integrated user management system.

### Seamless documentation

All sterilisation records and the cycle information are automatically saved in the internal memory of the unit. The records can be easily downloaded and opened as PDF files, with flexible options to do this via USB or Ethernet download.



### High-performance drying

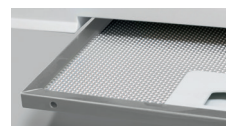
Consistent drying results even with complex loads thanks to a specially designed drying phase.

### Flexible drying cycle

Flexible options for extending the drying phase of the sterilisation cycle for loads that are particularly difficult to dry.

### Dust protection filter

The easily accessible and perfectly integrated dust protection filter protects the Hygoclave 40 unit against contamination and pollutants in the ambient air, without impeding the cooling system of the unit in the process.



# Overview of Hygoclave 40 and Hygoclave 40 Plus



Technical data	Hygoclave 40	Hygoclave 40 Plus
Supply voltage	220V-60 Hz, 230V-50 / 60 Hz, 240V-50 Hz	220V-60 Hz, 230V-50 / 60 Hz, 240V-50 Hz
Maximum current consumption	8.9 A	9.6 A
Maximum power consumption	2050 W	2200 W
External dimensions (W x H x D)	493 x 484 x 654 mm	493 x 484 x 654 mm
Weight	57 kg	61 kg
Chamber dimensions (Ø x D)	250 x 370 mm	250 x 450 mm
Chamber volume	17 l	22 l
Chamber material	Stainless steel	Stainless steel
Fresh water container	5.2 l	5.2 l

Maximum load / standard cycle	Hygoclave 40	Hygoclave 40 Plus
Unpackaged, bulky load	5.5 kg	6.5 kg
Packaged, bulky load	3.5 kg	4 kg
Porous load	1.5 kg	2 kg
Maximum load for B flash cycle	Hygoclave 40	Hygoclave 40 Plus
Maximum packaged solid load	0.5 kg	0.7 kg
Maximum porous load	0.2 kg	0.3 kg

Cycle times *	Hygoclave 40	Hygoclave 40 Plus
134 °C Standard	36 min	37 min
134 °C Prions	47 min	48 min
134 °C B flash	24 min	25 min
121 °C Standard	49 min	52 min

\* Average values determined at maximum load including pre-heating phase and drying.  
Standards: EN 13060 / EN 61010-1 / EN 61326 / EN 61010-2-40.



DÜRR DENTAL SE  
Höpfigheimer Str. 17  
74321 Bietigheim-Bissingen  
Germany  
More information under  
[www.duerrdental.com](http://www.duerrdental.com)  
[info@duerrdental.com](mailto:info@duerrdental.com)

 **DÜRR  
DENTAL**  
THE BEST, BY DESIGN